

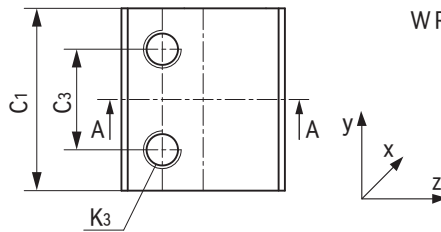
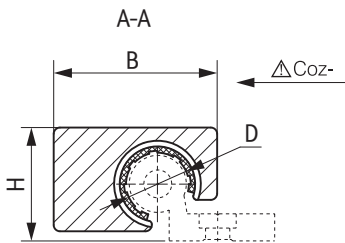
## WRU01不锈钢导轨滑块 Stainless steel guide rail sliding blocks



### 产品特性 Product features

- 安装标准滑动膜EPB13
- 316不锈钢轴承座
- 抗腐蚀能力强
- 自润滑、免维护
- 抵抗灰尘，低噪音运行
- 可用于WR不锈钢单轨和双轨
- Fitted standard liners EPB13
- Housing made of stainless steel 316
- Good corrosion resistance
- Self-lubricating and maintenance-free
- Resistant dust and low noise
- For WR ES single and dual guide rails

### 标准规格 Standard specifications



产品编码 Part No.:

WRU01-10-ES1-FL

FL:浮动 Float  
空白 Blank:标准 Standard  
材质 Material:  
316不锈钢 Stainless steel  
内径 Inner diameter

产品编码 Part No.	D [mm]	公差 Tolerance [mm]	B [mm]	C <sub>3</sub> [mm]	C <sub>1</sub> [mm]	H [mm]	K <sub>3</sub> [mm]	静态载荷 Static load			重量 Weight [g]
								Coy [N]	Coz+ [N]	Coz- [N]	
WRU01-10-ES1	10	+0.083/+0.020	26	16	29	18	M6	1200	1200	250	61
WRU01-16-ES1	16	+0.102/+0.032	34.5	18	36	27	M8	2100	2100	400	134
WRU01-20-ES1	20	+0.124/+0.040	42.5	27	45	36	M8	3200	3200	500	305
WRU01-25-ES1	25	+0.124/+0.040	52.5	36	58	45	M10	4800	4800	950	1230
WRU01-10-ES1-FL	10	+0.283/+0.220	26	16	29	18	M6	1200	1200	250	61
WRU01-16-ES1-FL	16	+0.302/+0.232	34.5	18	36	27	M8	2100	2100	400	134
WRU01-20-ES1-FL	20	+0.324/+0.240	42.5	27	45	36	M8	3200	3200	500	305
WRU01-25-ES1-FL	25	+0.374/+0.290	52.5	36	58	45	M10	4800	4800	950	1230