

WR02双圆不锈钢直线导轨 Stainless steel linear guides, double round rail



产品特性 Product features

- 316不锈钢双圆导轨
 - 较强的抗腐蚀能力
 - 配合LIN滑动膜抵抗污物
 - 免维护与低噪音运行
 - 标准安装宽度
- Dual guide rails made of stainless steel 316
 - Good corrosion resistance
 - Resistance to dirt with LIN liners
 - Maintenance-free and low noise
 - Standard fitting width

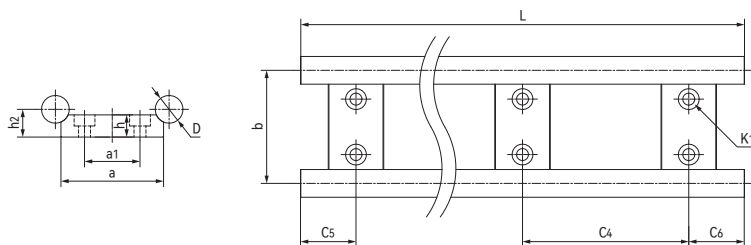
WR02

CSB-LIN®

www.csb-ep.com
sales@csb-ep.com

电话: 0573 84186133/84185527
Tel: 0086 573 84187009

标准规格 Standard specifications



产品编码 Part No.:

WR02-10-40-0000-ES1

材质 Material:
316不锈钢 Stainless steel
长度 Length
宽度 Width
直径 Diameter

产品编码 Part No.	D [mm]	h [mm]	h ₂ [mm]	b [mm]	a _{-0.3} [mm]	a ₁ [mm]	C ₄ [mm]	C ₅ =C ₆ [mm]		*K ₁ [mm]	L max. [mm]	重量 Weight [kg/m]
								min.	max.			
WR02-10-40-0000-ES1	10	5.5	9	40	40	-	120	20	79.5	**M6	3000	1.66
WR02-16-60-0000-ES1	16	12	14	58	54	-	120	20	79.5	M8	3000	4.59
WR02-20-80-0000-ES1	20	16	20	82	74	40	120	20	79.5	M8	3000	7.65

*K₁用于螺栓 For bolts **M6: 通孔 Plain holes ***WR02-10-40/WR02-16-60为单排安装孔 a single row of mounting holes